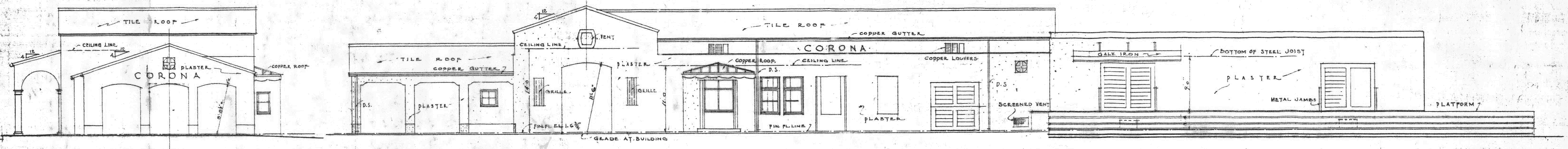
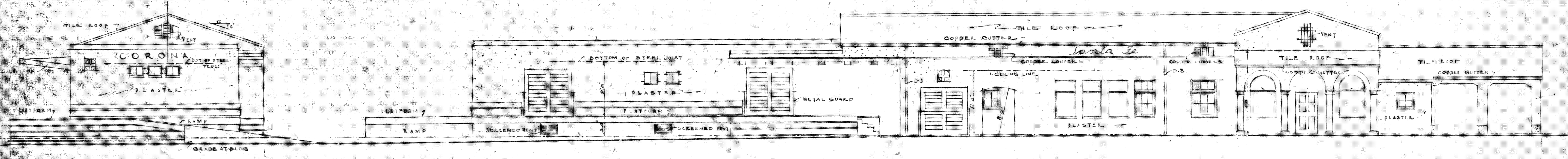


- SECTION 'A-A' -



EAST ELEVATION

- NORTH ELEVATION -



- WEST ELEVATION -

SOUTH ELEVATION

A. T. C. S. F. RY. CO.	SHEET 6 OF 16
FREIGHT & PASSENGER STATION - FOR -	C. E. C. L.
CORONA CALIFORNIA	192-21036
M. C. BLANCHARD CHIEF ENGINEER COAST LINES	LOS ANGELES
CORRECT - <i>H. S. Gilman</i> ARCHITECT COAST LINES	JULY 27 1936